



# TRAVELER

IMPACT REPORT

2021-2023



# THE LINDBLAD EXPEDITIONS-NATIONAL GEOGRAPHIC FUND

supports projects to understand and protect our world's ocean, restore critical marine and coastal habitats, and foster environmental stewardship in the regions visited by our fleet, and beyond. Funding for our work comes from shipboard travelers inspired by our shared mission.



**DEAR TRAVELER,**

While 2021 and 2022 were clearly troubled years with immense challenges, I'm happy to say that the Lindblad Expeditions-National Geographic Fund continued to thrive and

to grow in its dedication to conservation, science, and education. Together with our guests, we were able to invest nearly \$3 million in support of grants and programs. We also doubled our annual commitment to National Geographic Pristine Seas in order to expand marine protected areas globally.

In 2021-2022, the fund celebrated its commitment to many different forms of diversity: geographic, with investments in 21 countries; generational, with 18 grants to people early in their careers alongside legacy programs—including our decade-long support of Pristine Seas; and education, as the 50 educators selected for the latest cohort made the Grosvenor Teacher Fellowship the largest, most diverse class in the program's history.

It's hard to describe how satisfying it is to see such tremendous, valuable work being done by so many people in service to our planet. And I know that when travelers are exposed to the world's wonder and beauty, it often has a life-changing effect. This fund has become a tangible result of travelers wanting to invest in the planet's health, an investment that is crucial for the well-being and prosperity of future generations.

All the best,

**SVEN-OLOF LINDBLAD**  
Founder and Co-Chair of the Board  
Lindblad Expeditions

# YOUR IMPACT

Through your generous contribution, you're leading a wave of change for the ocean and the communities that depend on it. When you donate to the Lindblad Expeditions-National Geographic Fund, you are empowering changemakers to understand and protect biodiversity, preserve ocean habitats, address climate change, and more. Together, we can create a healthier and more resilient ocean and a brighter future for the planet.



## DEAR TRAVELER,

Growing up in Iowa, I dreamed of traveling and seeing the world beyond my family's farm. Throughout my childhood, I learned about our world through the inspiring stories in *National Geographic* magazine. It was a passport to never-before-seen places that captured my imagination.

Today, it is a tremendous honor to lead the National Geographic Society and build on our long legacy of exploration and adventure, driven by a nonprofit mission to illuminate and protect the wonder of our world.

We advance our mission by awarding grants to National Geographic Explorers: scientists, conservationists, educators, and storytellers who are committed to building a more sustainable world. We believe that the more opportunities people have to understand nature and see its beauty and awe—whether through magazines, TV, or their own travel experiences—the more inspired they'll be to protect it.

So we are delighted that you've had the opportunity to travel with the Lindblad Expeditions-National Geographic (LEX-NG) fleet and that you share our passion for exploration with a purpose! Many travelers who've boarded the Lindblad fleet have made generous contributions to the LEX-NG Fund and, in doing so, have joined our community of changemakers. This fund, a critical partnership between our organizations, supports projects that help protect the ocean and the habitats where our fleet travels. This includes furthering the work of Explorers who are safeguarding fragile marine ecosystems and supporting sustainable community development globally. Since 2008, travelers have invested almost \$18 million to support 243 grants to conservationists, researchers, and educators. The stories in this report underscore the significant progress we've made toward creating a healthier and more resilient ocean, thanks to contributions to the LEX-NG Fund.

Travel is more than recreation; it's an opportunity to make a lasting impact through thoughtful, sustainable exploration. As we celebrate the Society's 135<sup>th</sup> anniversary, we are grateful for the support of travelers like you, and proud to partner with organizations like Lindblad Expeditions, to accelerate impact for the ocean and the communities that depend on it. Thank you for traveling with purpose.

Gratefully,

A handwritten signature in black ink that reads "Jill Tiefenthaler".

**JILL TIEFENTHALER**  
Chief Executive Officer  
National Geographic Society

# \$2.9 MILLION INVESTED IN 2021-2022

Travelers aboard the Lindblad Expeditions-National Geographic fleet are contributing to critical marine and coastal conservation, community engagement, and educational efforts around the globe. On the following pages, you will learn more about the impactful work made possible through the LEX-NG Fund across five focus areas—conservation, education, research, storytelling, and technology.



## CONSERVATION

Contributions to the LEX-NG Fund are helping safeguard and restore vital ecosystems around the world, from the Galápagos Islands to French Polynesia, and beyond.



## RESEARCH

Travelers aboard our fleet help fund critical research that supports global conservation and management efforts, from invasive species assessments to studies of whale health, and more.



## EDUCATION

We support initiatives that enable youth and adults to develop environmental knowledge so they can contribute to the long-term sustainability of the planet.



## STORYTELLING

Stories weave threads of connection, empathy, and understanding, driving action. We support projects that harness the power of storytelling to inform, inspire, and catalyze positive change.



## TECHNOLOGY

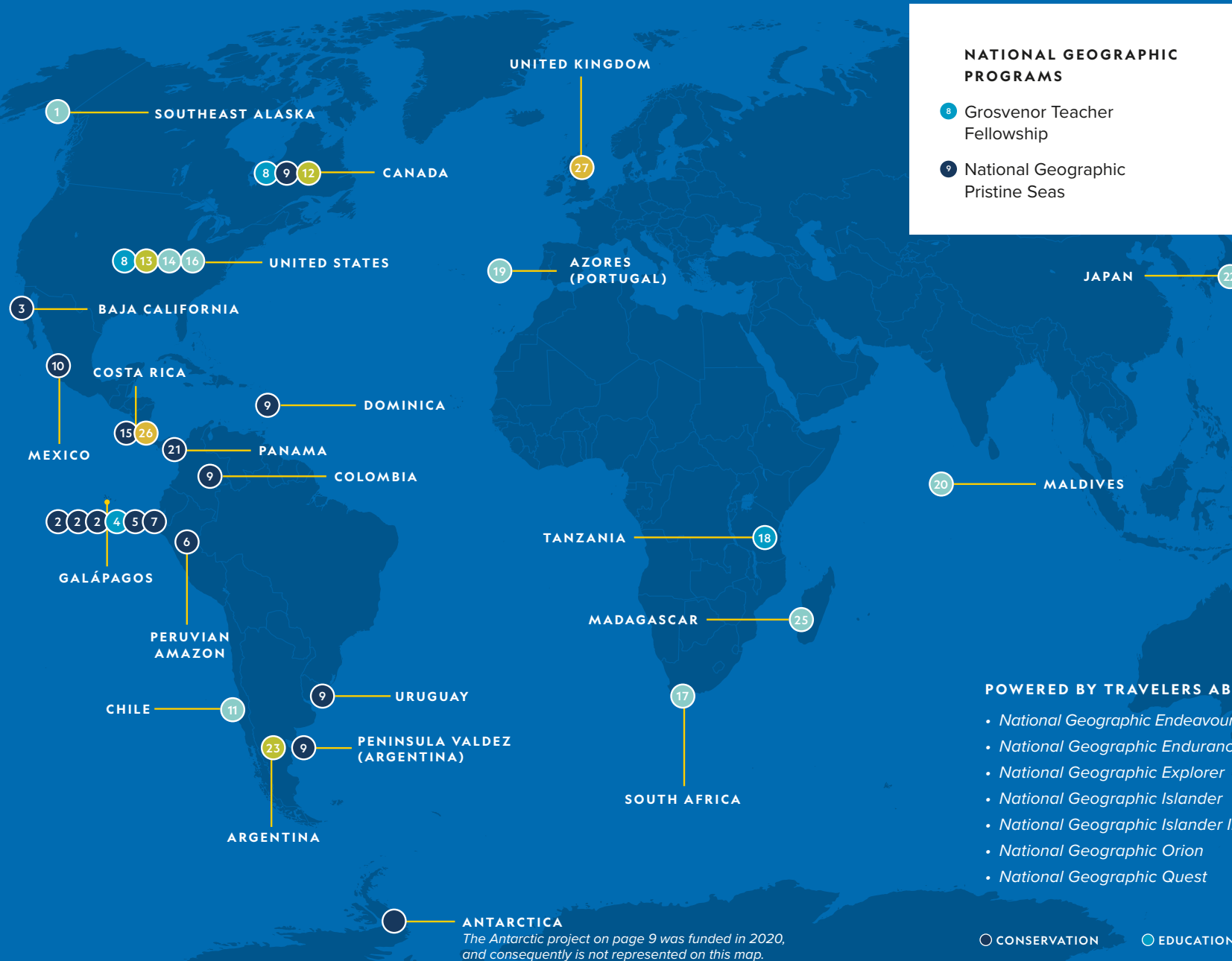
Donations to the LEX-NG Fund enable scientists to use new, cutting-edge technologies to test hypotheses and pilot innovative interventions to protect ecosystems.



\*Numbers reflected here are inclusive of funding provided between January 1, 2021, and December 31, 2022.

# GLOBAL IMPACT

Thanks to generous travelers like you, we are funding projects around the world that safeguard the ocean, support local communities, and help changemakers build a better future for the planet. In 2021-2022 alone, the LEX-NG Fund granted \$2,937,495 to projects in 21 countries and territories, leaving a lasting, positive impact. Thank you for making this critical work possible.



## REGIONAL PARTNERS

- 1 Alaska Whale Foundation
- 2 Charles Darwin Foundation
- 3 Fondo Mexicano para la Conservación de la Naturaleza
- 4 Fundación Scalesia
- 5 Jocotoco/Island Conservation
- 6 Minga Peru
- 7 WildAid

## NATIONAL GEOGRAPHIC PROGRAMS

- 8 Grosvenor Teacher Fellowship
- 9 National Geographic Pristine Seas

## NATIONAL GEOGRAPHIC SOCIETY EXPLORER-LED PROJECTS

- 10 Conserving and reforesting mangroves  
AVIMAE CADENA
- 11 Studying the ecology of the endangered sei whale  
CAMILA EUGENIA CALDERÓN QUIRGAS
- 12 Documenting Indigenous efforts to protect caribou  
CHRISTINE LIN
- 13 Photographing the rare American red wolf  
JESSICA SUAREZ
- 14 Examining effects of methyl-mercury exposure in bull sharks  
LAURA GARCIA BARCIA
- 15 Conserving seagrasses  
MARYLAURA SANDOVAL SILES
- 16 Studying the impacts of melting permafrost in the Alaskan Arctic  
MEGAN WILCOTS
- 17 Investigating marine invertebrate biodiversity in South Africa  
MELISSA KAY BOONZAAIER-DAVIDS
- 18 Improving science education in Africa  
MICHELE RAGGIO
- 19 Examining nocturnal behavior of seabird chicks  
MIRIAM CUESTA
- 20 Studying cryptic coral reef fish in the Maldives  
OLE BRODNICKE
- 21 Preserving Indigenous ethnobotanical knowledge  
SANTIAGO SAID
- 22 Studying the revitalization of Japan's traditional rural landscape  
SARAH S. MAHONEY
- 23 Telling the story of Andean condor conservation  
SOFIA MAÑAN
- 24 Codesigning a coral reef restoration strategy with the local community  
TITOUAN BERNICOT
- 25 Studying endangered baobabs to enhance conservation  
TONISOA TABIHAMALALA RANAIVOANDRIAMANANTENA
- 26 Developing innovations in volcanic forecasting  
YESSICA SALAS-NAVARRO
- 27 Using sustainable algae to produce biodegradable microbeads  
ZHIXUAN WANG

## POWERED BY TRAVELERS ABOARD:

- National Geographic Endeavour II
- National Geographic Endurance
- National Geographic Explorer
- National Geographic Islander
- National Geographic Islander II
- National Geographic Orion
- National Geographic Quest
- National Geographic Resolution
- National Geographic Sea Bird
- National Geographic Sea Lion
- National Geographic Venture
- Delfin II
- Sea Cloud

- CONSERVATION
- EDUCATION
- RESEARCH
- STORYTELLING
- TECHNOLOGY

# SOUTHEAST ALASKA



## Alaska Whale Foundation

The Alaska Whale Foundation (AWF) has been leading the fight to protect the health of marine mammals and coastal ecosystems in Southeast Alaska for nearly three decades. Thanks to generous contributions from travelers like you, the LEX-NG Fund is supporting the AWF's Ocean Health Program, an ongoing research and monitoring initiative that provides a picture of the health of the region's marine ecosystem. In 2022, during a five-month field season, the AWF collected critical information that will help researchers understand water conditions, marine nutrients, whale abundance, whale distribution patterns, and whale health. Support from the LEX-NG Fund is allowing the AWF to provide the robust scientific data that are needed to help policymakers and managers make conservation-oriented decisions that have a direct impact on ocean health and sustainability.



"The continued support of the LEX-NG Fund has allowed the AWF to build and sustain an impactful and comprehensive long-term research program at a critical time for our planet and our oceans."

**DR. ANDY SZABO**  
Executive Director  
Alaska Whale Foundation

RESEARCH

# ANTARCTICA



"Antarctica is a difficult and expensive place to conduct research, and for us it has only been possible thanks to long-term support from the LEX-NG Fund."

**DR. HOLLY FEARNBACH**  
Marine Mammal Research  
Director  
SeaLife Response,  
Rehabilitation, and Research

CONSERVATION

## SR<sup>3</sup> SeaLife Response, Rehabilitation, and Research\*

The waters around the Antarctic Peninsula are warming rapidly, changing marine ecosystems. Support from the LEX-NG Fund is helping Dr. Holly Fearnbach and Dr. John Durban lead new studies on whale health amidst these warming waters. For more than 10 years, travelers like you have allowed this world-renowned husband-and-wife team to conduct research in remote locations around the Antarctic Peninsula, gathering data on killer whales, humpback whales, and minke whales. Operating at the forefront of whale research, they use photogrammetry and novel drone technology to identify, track, and monitor the health of individuals. Using *National Geographic Explorer* as a platform for their work has directly contributed to the publication of 18 peer-reviewed scientific papers. This critical research, made possible by contributions to the LEX-NG Fund, not only provides a snapshot of current whale health, which can be used to infer the health of the surrounding ecosystem, but also continues key monitoring that detects changes over time.

\*This grant was funded in 2020 and implemented during the period of this Impact Report, due to COVID-19-related delays.

## BAJA CALIFORNIA



## Fondo Mexicano para la Conservación de la Naturaleza

The Gulf of California region—known for its biodiversity that supports a complex web of fish, marine mammals, and birds—is facing threats from climate change, unsustainable fishing, and coastal development. The Gulf of California Conservation Fund (GCCF), supported by the Fondo Mexicano para la Conservación de la Naturaleza (Mexican Fund for the Conservation of Nature), works to empower communities in the region to use their natural resources sustainably and engage in economic activities that support the conservation of marine and coastal ecosystems. In 2021-2022, the GCCF funded 11 projects in the region, including a long-term seabird-monitoring project on Isla Rasa, where elegant terns and 90 percent of the world's Heermann's gulls come to breed. In addition, the GCCF supports sustainable-use strategies such as nature-based tourism and fisheries management, coral and mangrove conservation programs, and capacity building for local communities. By contributing to the LEX-NG Fund, generous people like you have helped make the GCCF's conservation work possible.

“Thanks to your donations we can continue working for the conservation of the Gulf of California, just as travelers like you want to continue enjoying its beautiful landscapes, flora, and fauna. Thank you for being an essential part of this work!”

**ISABEL BELLO**  
Conservation Officer  
Fondo Mexicano para la  
Conservación de la Naturaleza

● CONSERVATION

## COSTA RICA



## Raising Coral Costa Rica

Costa Rica's Golfo Dulce is one of only four tropical fjords in the world. Its coastal mangroves, reefs, and seagrasses are home to the breeding and feeding grounds of a number of vulnerable species. But these ecosystems are in decline, and they are dependent on each other—seagrasses produce oxygen, filter water, and allow movement of nutrients between ecosystems, and mangroves and corals need these ecosystem services to stay healthy. With support from the LEX-NG Fund, Marylaura Sandoval Siles is working to ensure all these ecosystems thrive by focusing on the protection and restoration of seagrasses. In 2022 and 2023, her team is evaluating innovative restoration techniques for use in Golfo Dulce and developing recommendations for conservation management. By empowering community members to co-lead the project and be spokespeople for seagrasses, she hopes to create a sustainable movement for the protection of these unique coastal environments.

“We forget that seagrasses provide oxygen, filter water, and allow the movement of nutrients between ecosystems—the coastal habitat of Golfo Dulce needs seagrasses to remain healthy. Thank you for making our work to preserve them possible.”

**MARYLAURA SANDOVAL SILES**  
Marine Conservation Biologist  
Raising Coral, Amigos of Costa Rica

● CONSERVATION

# FRENCH POLYNESIA



## Coral Gardeners

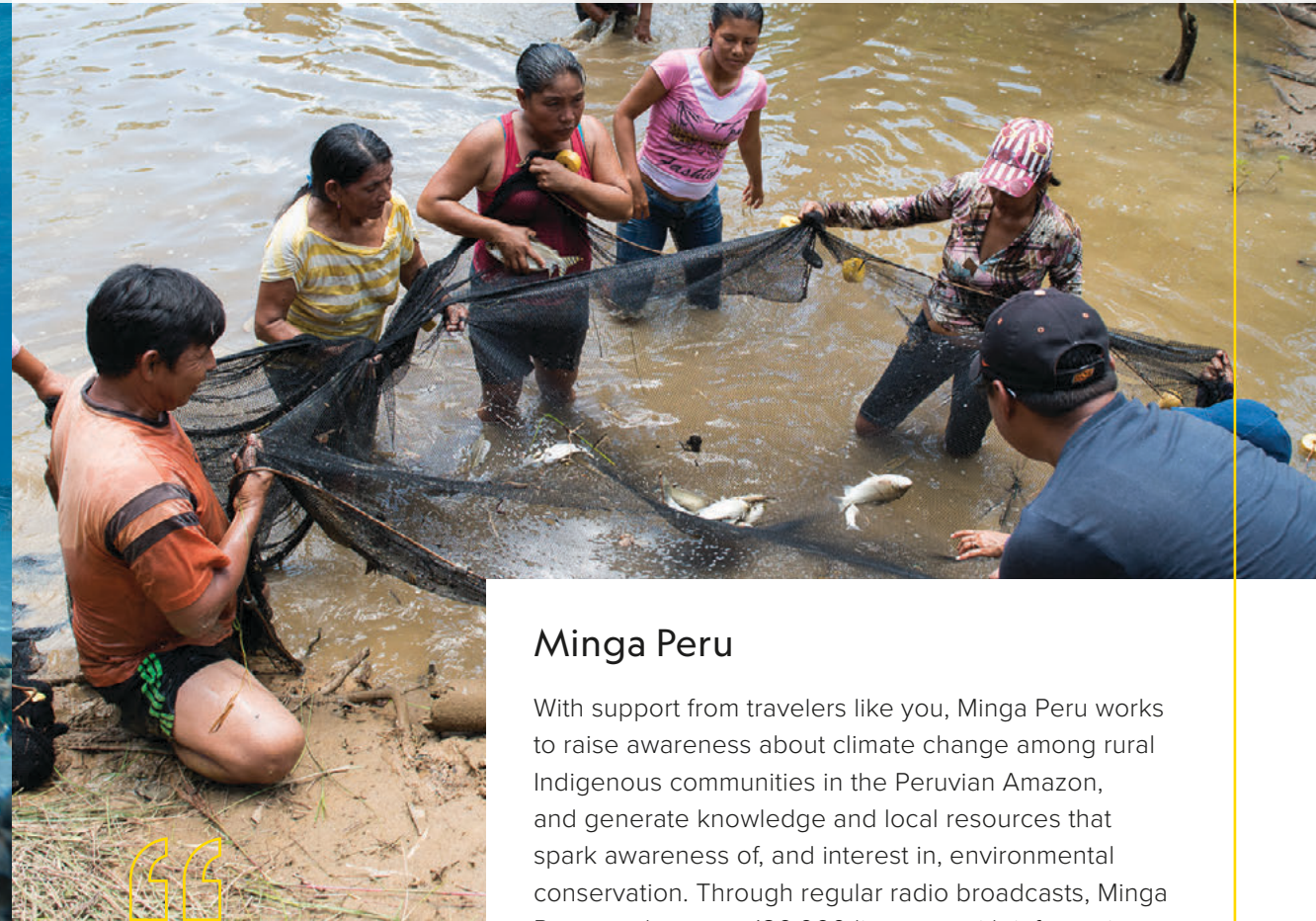
National Geographic Explorer Titouan Bernicot believes it is possible to restore the ocean, one coral at a time. His organization, Coral Gardeners, works on coral restoration on his home island of Mo'orea in French Polynesia, growing super corals in nurseries and transplanting them to degraded reefs. With support from LEX-NG travelers, Bernicot is working with islanders from the atoll of Tikehau in the Tuamotu Archipelago to develop a coral reef restoration project there, adapting the Coral Gardeners' successful work in Mo'orea to the environment at Tikehau. Along with the local community, his team carried out two field expeditions in 2021 to conduct an on-site assessment of coral reefs, providing scientific training to community team members, and developed a local-scale coral reef restoration strategy, including methods, sites, and tools. Through support for the LEX-NG Fund, you are helping Bernicot and conservation heroes like him restore our ocean to health.

“Your support through the LEX-NG Fund gave me the opportunity to empower Tikehau’s fisher community, who expressed a strong desire to preserve their reef and excitement to be given actual solutions.”

**TITOUAN BERNICOT**  
Founder  
Coral Gardeners

● CONSERVATION

# PERUVIAN AMAZON



## Minga Peru

With support from travelers like you, Minga Peru works to raise awareness about climate change among rural Indigenous communities in the Peruvian Amazon, and generate knowledge and local resources that spark awareness of, and interest in, environmental conservation. Through regular radio broadcasts, Minga Peru reaches over 120,000 listeners with information about climate change and conservation, as well as social issues like domestic violence prevention. In 2022, with support from the LEX-NG Fund, more than 60 youth from 30 communities were trained in forest conservation and eco-friendly entrepreneurship projects and shared their knowledge with an additional 300 young people in their communities. Twenty women received training in conservation, climate change, human trafficking, and conflict resolution and shared this information with more than 700 additional women through community meetings. Minga Peru also helped 150 families plant 20,000 timber and fruit trees, providing them with food and economic resources, preventing soil degradation, and enriching the Amazonian forest.

“Your support is reaching communities in the Amazon and allows us to fulfill our mission to strengthen leaders, organizations, and social networks representing the most marginalized communities of Latin America and the Caribbean.”

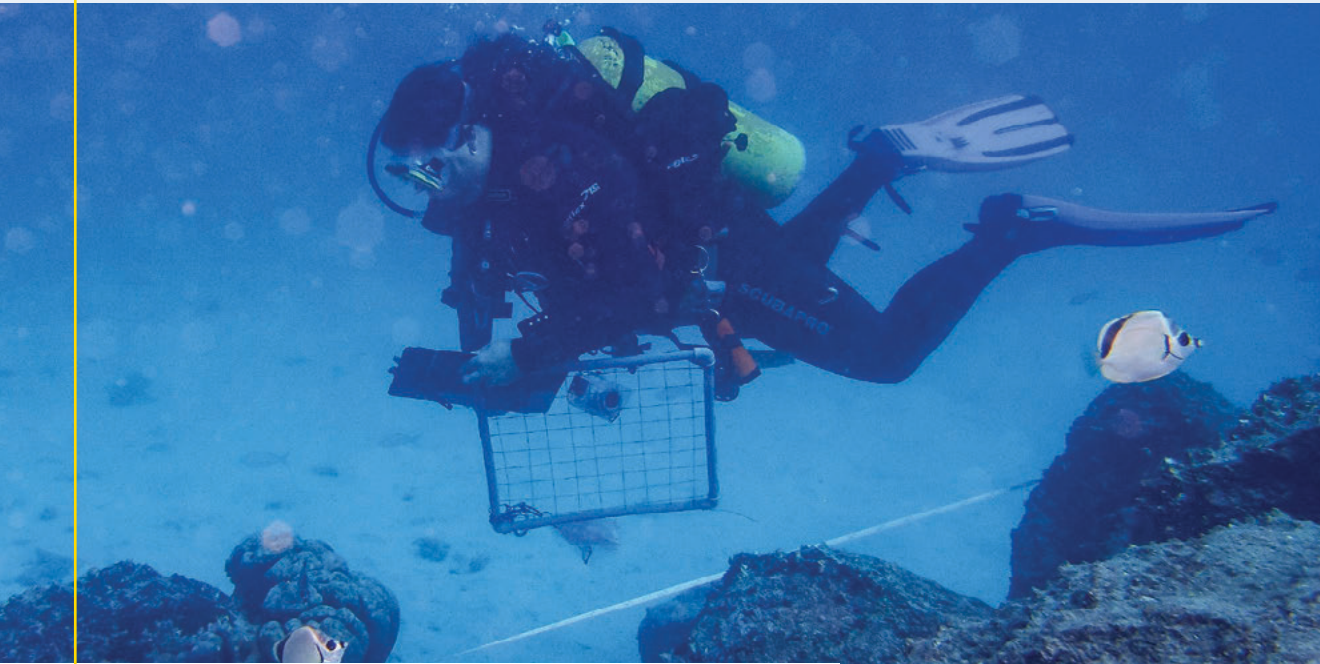
**ANA LUCÍA RAMOS**  
Institutional Development  
Coordinator  
Minga Peru

● CONSERVATION



## GALÁPAGOS

## GALÁPAGOS



## Charles Darwin Foundation

With support from the LEX-NG Fund, the Charles Darwin Foundation is working to safeguard the unique ecosystems and native and endemic species of the Galápagos Islands. In 2021-2022, contributions from travelers like you helped Dr. Inti Keith's team gather baseline data on introduced marine species in the Galápagos Marine Reserve (GMR) and create shared tools, resources, and protocols to mitigate the risk of invasive species. Through science and management solutions, she is helping to protect, empower, and sustain communities in Galápagos while protecting the native species that call the GMR home. A LEX-NG Fund grant also enabled Dr. Heinke Jäger to continue critical long-term monitoring of the endemic *Scalesia* forest on Santa Cruz Island, which is under threat from invasive species, and supported Dr. Charlotte E. Causton's work to test techniques to eradicate the invasive avian vampire fly (*Philornis downsi*), whose larvae feed on the blood of critically endangered mangrove finch hatchlings and other bird species.



"Each donation opens exciting opportunities for scientists in Galápagos to conduct critical research that is needed for the conservation of this unique place. Thanks to generous donations from LEX-NG guests, we have been able to explore more of the islands and gain knowledge to protect them."

**DR. INTI KEITH**

Principal Investigator, Marine Invasive Species Project  
Charles Darwin Foundation

● CONSERVATION



"Thank you for supporting our efforts to conserve and restore Galápagos' threatened ecosystems and their endangered species. With your support, we're showing that it is possible to restore a balance between humans and nature."

**VÍCTOR CARRIÓN**

Island Restoration Coordinator  
Galápagos Program, Fundación de Conservación Jocotoco

● CONSERVATION

## Fundación de Conservación Jocotoco and Island Conservation

Fundación de Conservación Jocotoco and Island Conservation are committed to a holistic approach to rewilding the Galápagos Islands, one that combines empowering communities, managing invasive species, and reintroducing endangered, native species. The organizations' Floreana Island Ecological Restoration Project seeks to manage and remove invasive species from the Galápagos Islands so that endangered native species can be reintroduced and thrive. In 2022, contributions to the LEX-NG Fund supported data collection to understand how specific native species are being impacted by invasive species as well as efforts to monitor the endangered Galápagos petrel on Floreana Island. With support from travelers like you, Fundación de Conservación Jocotoco and Island Conservation developed a database and trained local partners in its use, securing community engagement and support for the project. The team's work to remove invasive species and promote sustainable farming practices will allow the reintroduction of 13 locally extinct wildlife species, including the Floreana giant tortoise, the Floreana mockingbird, the gray warbler finch, the vermilion flycatcher, and the Galápagos hawk.

## GALÁPAGOS

## GALÁPAGOS



## Fundación Scalesia

The Fundación Scalesia and the Tomás de Berlanga School (TdB) provide Galápagos residents with exceptional educational opportunities that support the conservation and protection of this World Heritage site. With help from LEX-NG travelers, in 2022, Fundación Scalesia provided continued professional development for teachers from all 20 public schools in Galápagos to enhance their teaching of environmental and sustainability issues. As teachers gain new skills and master improved methodologies, students gain a better understanding of, and appreciation for, the Galápagos's ecosystems and feel empowered to become environmental stewards of the islands they call home. Through field-based learning and alignment with the UN's Sustainable Development Goals, Fundación Scalesia and TdB are working to address not only local but global challenges.

“We are so grateful for the vision and generosity of LEX-NG travelers who make it possible for us to foster long-term conservation through education. Our programs would be impossible without you!”

**JOHANNA CARRIÓN**  
Chief Executive Officer  
Fundación Scalesia

● EDUCATION



## WildAid

With support from travelers aboard the LEX-NG fleet, WildAid is working to address the need for sustainable management and protection of resources within the Galápagos National Park. In 2022, the LEX-NG Fund helped WildAid create the Galápagos Conservation Fund to promote sustainable, long-term financing for enforcement operations in the Galápagos Marine Reserve (GMR). The creation of the fund, which is currently undergoing final government approval processes, serves as a model for financing marine protected area enforcement efforts that can be replicated globally. Additionally, WildAid began implementing a fleet renewal plan and sent the first new interceptor vessel to the GMR to strengthen enforcement capacity against illegal fishing vessels, and continued population monitoring of spiny lobsters and sea cucumbers, providing valuable information for fisheries management.

“WildAid is grateful for the support of the LEX-NG Fund donors. Because of their contributions, we have been able to strengthen enforcement of the Galápagos National Park and establish sustainable funding to ensure its continued protection.”

**MANUEL BRAVO**  
Latin America Regional Director  
WildAid

● CONSERVATION



NATIONAL GEOGRAPHIC

# PRISTINE SEAS

National Geographic Pristine Seas is a project to explore, document, and protect the wildest places in the ocean. Under the leadership of National Geographic Explorer in Residence Dr. Enric Sala, the Pristine Seas team conducts scientific research expeditions, creates media, and partners with governments, NGOs, and local communities to inspire the creation of marine reserves around the globe. With support from the LEX-NG Fund, Pristine Seas has helped create 26 marine protected areas, covering a total area of over 6.5 million square kilometers—more than twice the size of India.

“Our efforts to protect healthy marine ecosystems work. We are now scaling our work to protect more vital places in the ocean and inspire the global community to take action to preserve the ocean for future generations.”

**DR. ENRIC SALA**  
National Geographic  
Explorer in Residence and  
Executive Director  
Pristine Seas



Thanks to the generous support of travelers like you, in 2021, the Pristine Seas team made a return voyage to the Southern Line Islands, where it first conducted an expedition in 2009. The team members' work there contributed to the creation of a marine protected area in 2014. But when El Niño moved across the Pacific the following two years, half of the corals in their research area died. However, what the team members found upon their return in 2021 proved extraordinary: dense healthy coral covering 90 percent of the seabed, demonstrating that the project's approach of supporting the creation of marine protected areas is working. The story of this remarkable undersea habitat was featured in the November 2022 issue of *National Geographic* magazine.

In the spring of 2022, the team traveled to Colombia's Pacific and Caribbean coasts, where it conducted scientific research to support the designation of a new marine protected area in Colombia's waters and to produce a National Geographic documentary to showcase Colombia's marine biodiversity. This was followed by an expedition to the Arctic and subarctic waters of Canada, where team members partnered with five Indigenous communities in James and Hudson Bays. There, they documented unique and largely understudied underwater ecosystems and captured footage to produce two documentary films—supporting marine conservation initiatives and sharing Indigenous voices and visions for ocean stewardship.



“Being a part of this unique field-based professional development has renewed my enthusiasm and energy for the important work I do with my students, teachers, and extended community. I am excited to bring back knowledge and new perspectives, much needed for redefining our relationship with the planet. Thank you for investing in me.”

**CHARU GULATI**  
 2020 Grosvenor Teacher Fellow  
 Tierra Linda Middle School  
 San Carlos, California



# GROSVENOR TEACHER FELLOWSHIP

The Grosvenor Teacher Fellowship is a two-year professional development opportunity for Pre-K–12 educators made possible by a partnership between Lindblad Expeditions and the National Geographic Society. Through a competitive application process, we select exemplary educators to host aboard Lindblad Expeditions’ voyages for a life-changing, field-based experience. Our Grosvenor Teacher Fellows transfer their onboard experience into new ways to teach students, engage colleagues, and bring geographic awareness into their learning environments and communities.

The 2020-2022 cohort of fellows is the largest and most diverse in the program’s history, with teachers joining us from locations across the United States and Canada, from Honolulu to Baltimore and from Winnipeg to Houston.

# FUND SUMMARY

For more than 14 years, the LEX-NG Fund has invested in critical conservation projects, innovative research, essential education, and inspiring storytelling. Nearly 250 projects totalling almost \$18 million have been supported in locations around the globe, thanks to generous contributions from travelers like you. We've made real impacts through the creation of marine protected areas, development of conservation management plans, groundbreaking discoveries, and community education programs to protect our ocean habitats and support the people who depend on them for their livelihoods.

## 2008 - 2022 IMPACT\*

\$17,972,061

INVESTED IN GRANTS & PROGRAMS

243

GRANTS AWARDED

27,662

LEX-NG FUND GIFTS

7

CONTINENTS

52

COUNTRIES

315

GROSVENOR TEACHER FELLOWS

6.5 M+

SQUARE KM OF OCEAN PROTECTED

*\*Numbers current as of December 31, 2022.*



# THANK YOU

By choosing to support the dedicated, passionate individuals who are leading the way in ocean and coastal conservation, you are helping to restore ocean health and benefiting communities across the globe—**thank you**. This inspiring, impactful work could not happen without the generosity of people like you. Thank you for traveling aboard the Lindblad Expeditions-National Geographic fleet and for championing a brighter, more sustainable future for the planet.

To contribute to or renew your support of the LEX-NG Fund, visit [give.ngs.org/LEXimpact](https://give.ngs.org/LEXimpact).

## LEX-NG FUND BOARD MEMBERS

### Dr. John Francis

Independent Consultant

### Sven-Olof Lindblad

Founder and Co-Chair of the Board  
Lindblad Expeditions

### Dr. Ian Miller

Chief Science and Innovation Officer  
National Geographic Society

### Alex Moen

Chief Explorer Engagement Officer  
National Geographic Society

### Lorenzo Rosenzweig

CEO, Terra Habitats, A.C.  
Chairperson, Mesoamerican Reef Fund

---

To give online and increase the positive impact we make together, please visit [give.ngs.org/LEXimpact](https://give.ngs.org/LEXimpact).

For more information about the projects the LEX-NG Fund supports around the world, contact Amy Berquist (Lindblad Expeditions) and Teresa Leonardo (National Geographic Society) at [ocean@ngs.org](mailto:ocean@ngs.org). To learn more about donating to the LEX-NG Fund, please contact Renee Clark at [rclark@ngs.org](mailto:rclark@ngs.org).

---

## PHOTOGRAPHY CREDITS

Cover and inside cover: Ralph Lee Hopkins.  
Page 1: Kristin Lindblad. Page 2: Ralph Lee Hopkins.  
Page 3: Mark Thiessen/National Geographic.  
Page 4: David Vargas. Page 5, from top: David Vargas (2), Evan Thornton, David Vargas, Jumara Films.  
Page 8: AWF Field Team, image collected under NMFS Permit #19703. Page 9: John Durban and Holly Fearnbach, research conducted under NMFS Permit No. 19091 and Antarctic Conservation Act Permit ACA 2017-029. Page 10: Erandi Peña – Partial Report FGC.  
Page 11: Michael S. Nolan. Page 12: Killian Domingo for Coral Gardeners. Page 13: Alexandra Daley-Clark.  
Page 14: Stuart Banks. Page 15: Getty Images/iStockphoto. Pages 16-17: Alexandra Daley-Clark.  
Page 18: Brian Zgliczynski. Page 19, from top: Manu San Félix, Jon Betz. Pages 20-21: portraits courtesy of Grosvenor Teacher Fellows. Page 22: Ralph Lee Hopkins. Page 24: Michael S. Nolan. Back cover: Ralph Lee Hopkins.

